

PROMs report for:

James Hahnel

Comprising primary hips and knees with pre-op and 6 month post-op PROMs data:

From: 23/03/2009

To: 29/03/2018

Produced on: 04/09/2019

Contents

Usage by Hospital	2
Primary Total Hip Replacement	3
Primary Bicondylar Knee Replacement	15
Methodology	27
Disclaimer	28

This analysis is based on data collected by the NJR, and PROMs data collected by NHS Digital. PROMs data has been collected from providers of NHS-funded care in England since April 2009. PROMs scores are included in this analysis where complete paired pre-operative and 6-month post-operative scores are available, and have been linked to consented and traceable NJR primary hip and knee procedures.

This report is made available to James Hahnel , who is free to share this report as required.

PROMs Report for:

James Hahnel

PROMs records by Hospital

Hospital	Bicondylar Knees	Unicondylar Knees	Total Hips
Bradford Royal Infirmary	165 (338)	1 (35)	84 (201)
The Yorkshire Clinic	96 (178)	0 (14)	67 (113)
Nuffield Health Leeds Hospital	96 (149)	0 (23)	68 (115)
Chapel Allerton Hospital	3 (8)	0 (0)	7 (12)
Total	360 (673)	1 (72)	226 (441)

Table includes all procedures for which paired pre-operative and 6-month post-operative scores are available for any of the PROMs collected (Oxford Score, EQ-5D, EQ-VAS).

Figures in brackets correspond to the total number of procedures for which the consultant was responsible in that hospital over the same time period.

PROMs Report for:

James Hahnel

Primary Total Hip Replacement

Patient Details

	Consultant THR with paired PROMs	All other THR in NJR with paired PROMs
Total Procedures	226	300,572
Total Patients	209	277,734
Demographics		
Mean age	68.7	69.2
< 50	1.3%	4.3%
50 – 59	17.3%	12.3%
60 – 69	30.5%	30.9%
70 – 79	38.1%	36.9%
≥ 80	12.8%	15.6%
Median BMI	29	28
% BMI information available	71.7%	74.9%
Underweight (BMI < 18.5)	0.6%	0.7%
Normal (18.5 ≤ BMI < 25)	21.0%	19.3%
Overweight (25 ≤ BMI < 30)	37.7%	40.6%
Obese I (30 ≤ BMI < 35)	26.5%	26.6%
Obese II (35 ≤ BMI < 40)	12.3%	9.8%
Obese III (BMI ≥ 40)	1.9%	3.0%
% Male	39.4%	40.1%
ASA Grades		
P1 - Fit and healthy	15.0%	13.6%
P2 - Mild disease not incapacitating	75.7%	71.4%
P3 - Incapacitating systemic disease	9.3%	14.7%
P4 / P5	0.0%	0.3%
Indications		
Osteoarthritis	91.15%	96.08%
Rheumatoid Arthritis	2.21%	1.28%
Avascular Necrosis	3.54%	1.83%
Fractured Neck of Femur	0.44%	0.11%
CDH/DDH	0.88%	1.39%
Other	2.65%	1.27%

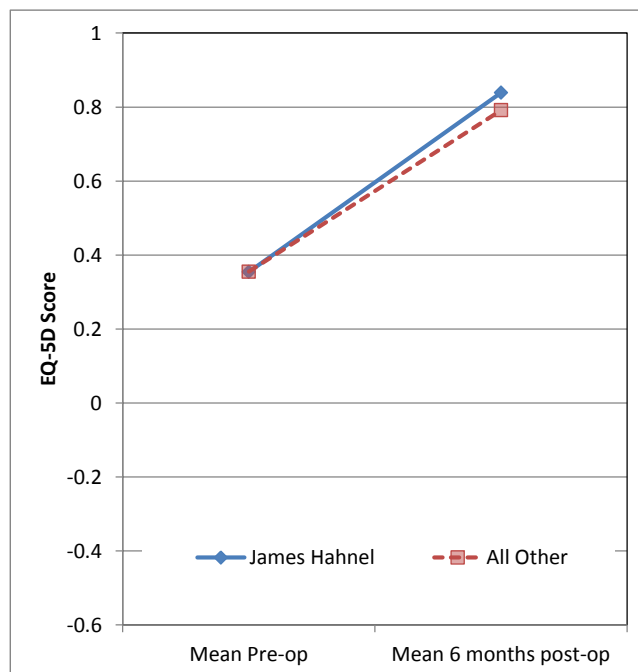
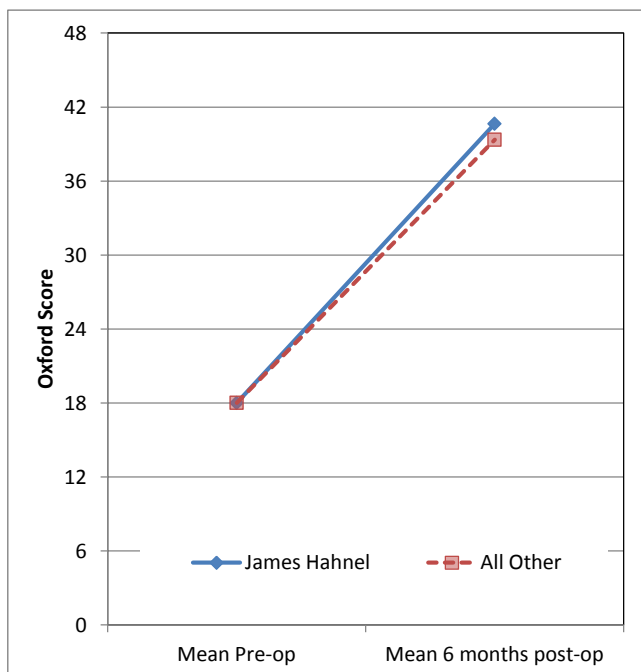
Total of indications may exceed total number of implants, since more than one indication can be listed per case.

PROMs Report for:

James Hahnel

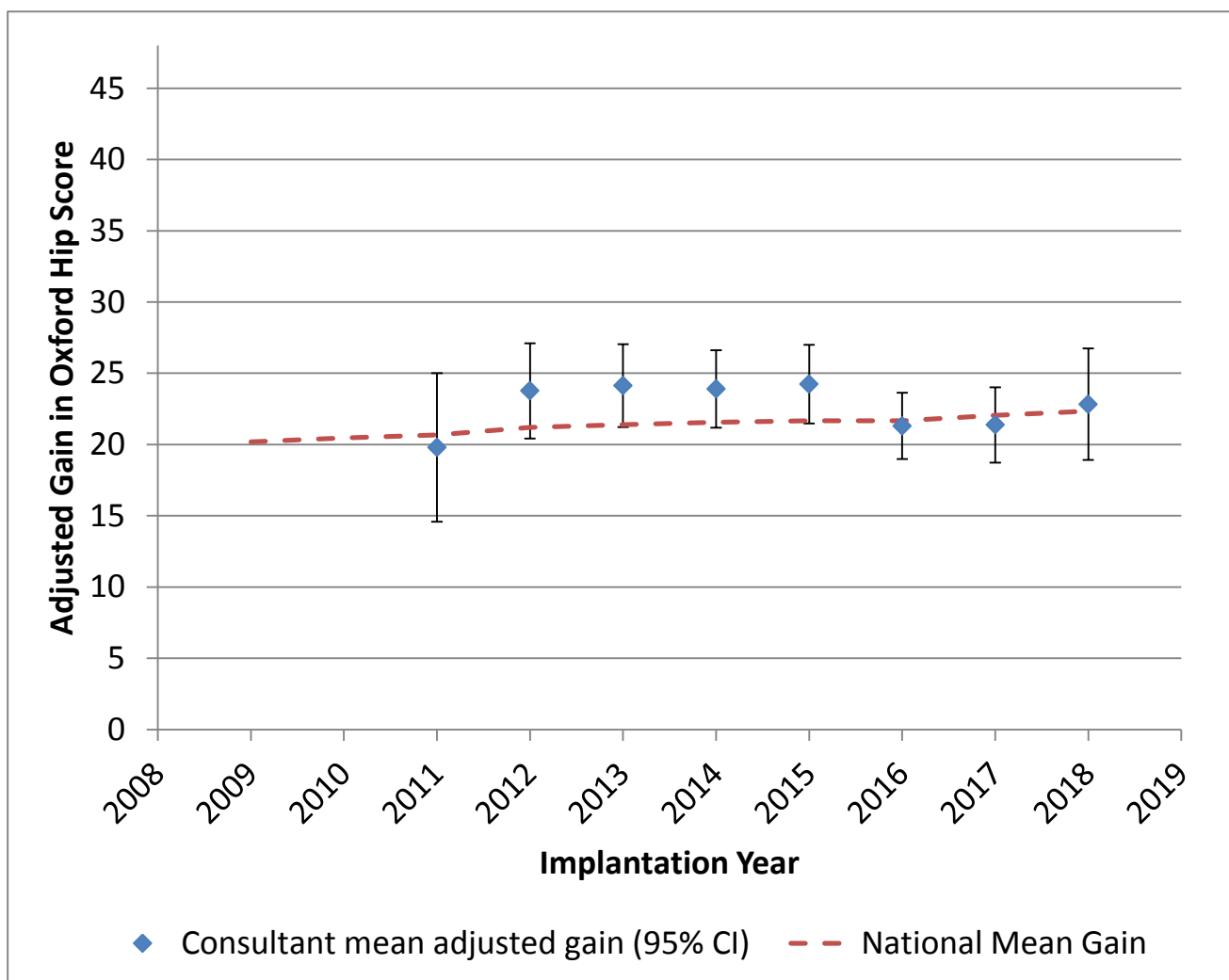
Primary Total Hip Replacement

PROMs Analysis



Primary Total Hip Replacement

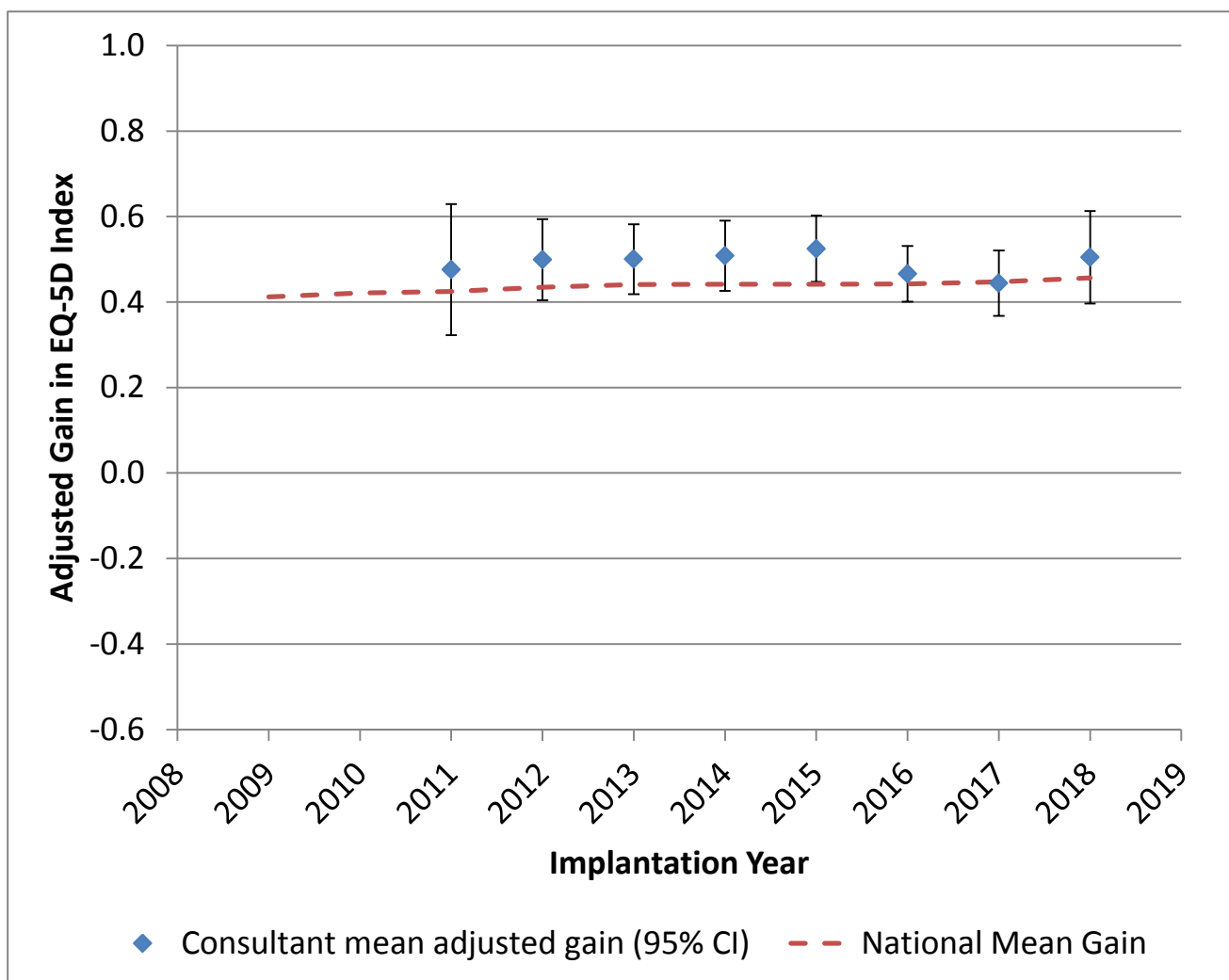
Oxford Hip Score



The dashed red line representing national mean gain shows the mean adjusted gain in PROMs score for each implantation year. This is based on all implants with an NHS PROMs score linked to an NJR record, and can vary from year to year.

Primary Total Hip Replacement

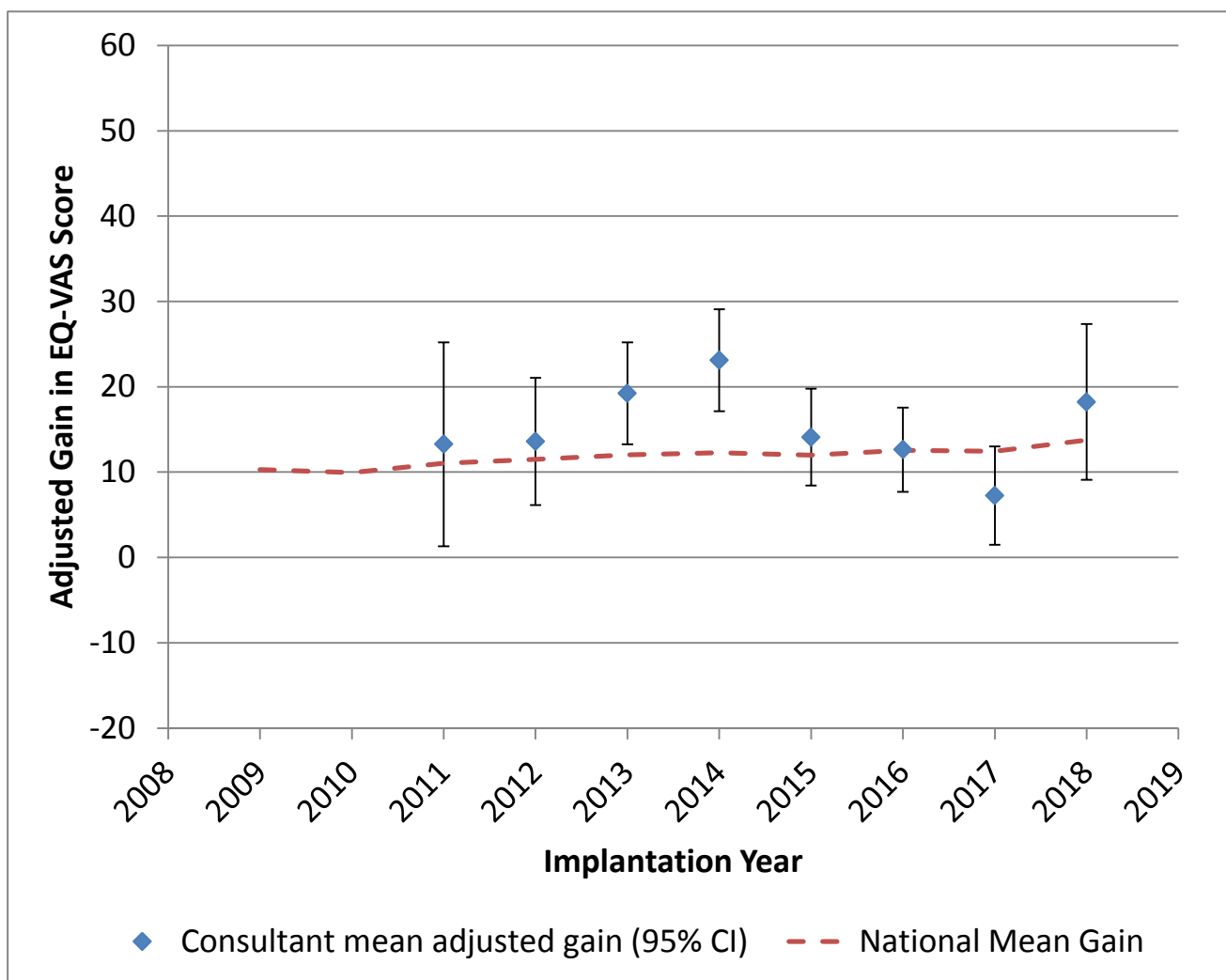
EQ-5D Index



The dashed red line representing national mean gain shows the mean adjusted gain in PROMs score for each implantation year. This is based on all implants with an NHS PROMs score linked to an NJR record, and can vary from year to year.

Primary Total Hip Replacement

EQ-VAS



The dashed red line representing national mean gain shows the mean adjusted gain in PROMs score for each implantation year. This is based on all implants with an NHS PROMs score linked to an NJR record, and can vary from year to year.

PROMs Report for:

James Hahnel

Primary Total Hip Replacement

PROMs Analysis

Oxford Hip Score (0 - 48)	James Hahnel	All other THR
Paired Records	221	290,765
PreOp score	18.0 (16.9 - 19.1)	18.0 (18.0 - 18.0)
6 month score	40.6 (39.5 - 41.8)	39.3 (39.3 - 39.4)
Health gain	22.6 (21.3 - 23.9)	21.3 (21.3 - 21.4)
Health gain (adjusted)	22.8 (21.7 - 23.8)	21.3 (21.3 - 21.4)
Difference in adjusted gain *	0.4 to 2.5	
% Score Improved	98.2%	97.2%
% Adjusted gain > 0	98.2%	97.9%
p value % adjusted gain > 0	1	

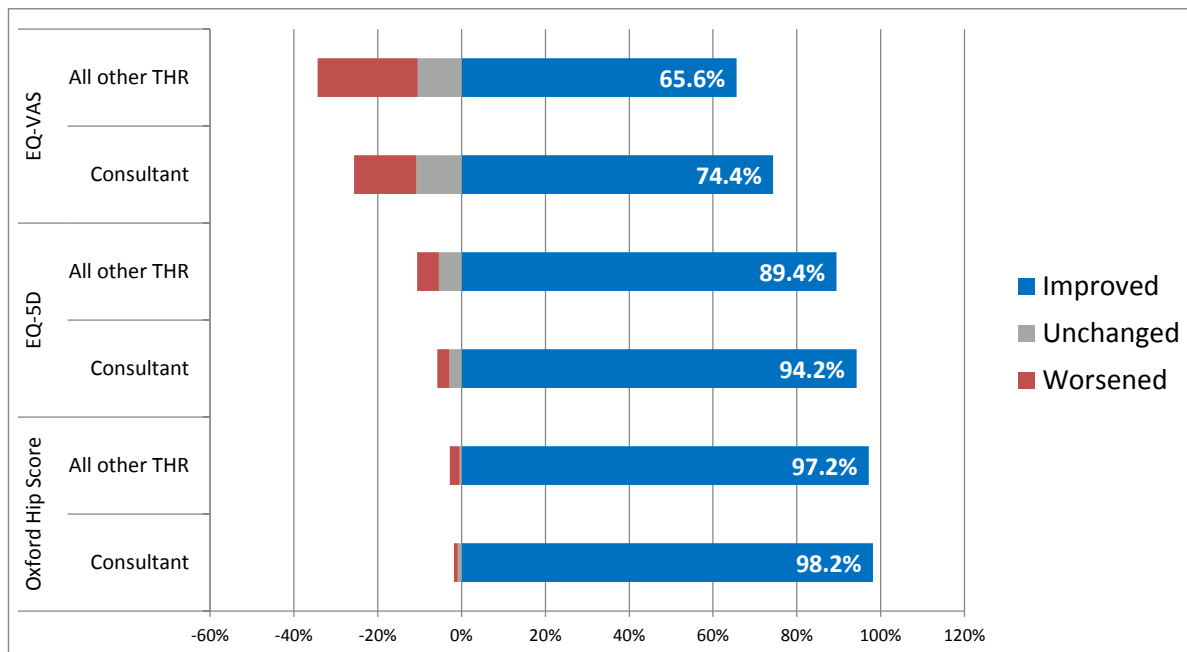
EQ-5D Index (-0.59 - 1.00)	James Hahnel	All other THR
Paired Records	208	267,393
PreOp score	0.354 (0.311 - 0.398)	0.355 (0.354 - 0.356)
6 month score	0.839 (0.806 - 0.872)	0.791 (0.791 - 0.792)
Health gain	0.485 (0.439 - 0.531)	0.437 (0.435 - 0.438)
Health gain (adjusted)	0.488 (0.458 - 0.518)	0.437 (0.436 - 0.437)
Difference in adjusted gain *	0.022 to 0.082	
% Score Improved	94.2%	89.4%
% Adjusted gain > 0	96.6%	95.0%
p value % adjusted gain > 0	0.34	

EQ-VAS (0 - 100)	James Hahnel	All other THR
Paired Records	195	256,406
PreOp score	65.7 (62.6 - 68.7)	65.0 (64.9 - 65.1)
6 month score	79.7 (77.2 - 82.3)	76.8 (76.7 - 76.9)
Health gain	14.1 (10.8 - 17.3)	11.8 (11.7 - 11.9)
Health gain (adjusted)	14.9 (12.7 - 17.2)	11.8 (11.7 - 11.8)
Difference in adjusted gain *	0.9 to 5.4	
% Score Improved	74.4%	65.6%
% Adjusted gain > 0	85.1%	81.3%
p value % adjusted gain > 0	0.2	

Adjusted scores correspond to the NHS Digital version 3 casemix-adjustment model. See methodology page for details. Figures in brackets correspond to 95% confidence intervals. * 95% confidence interval for the mean adjusted gain for the consultant, minus the national average adjusted gain.

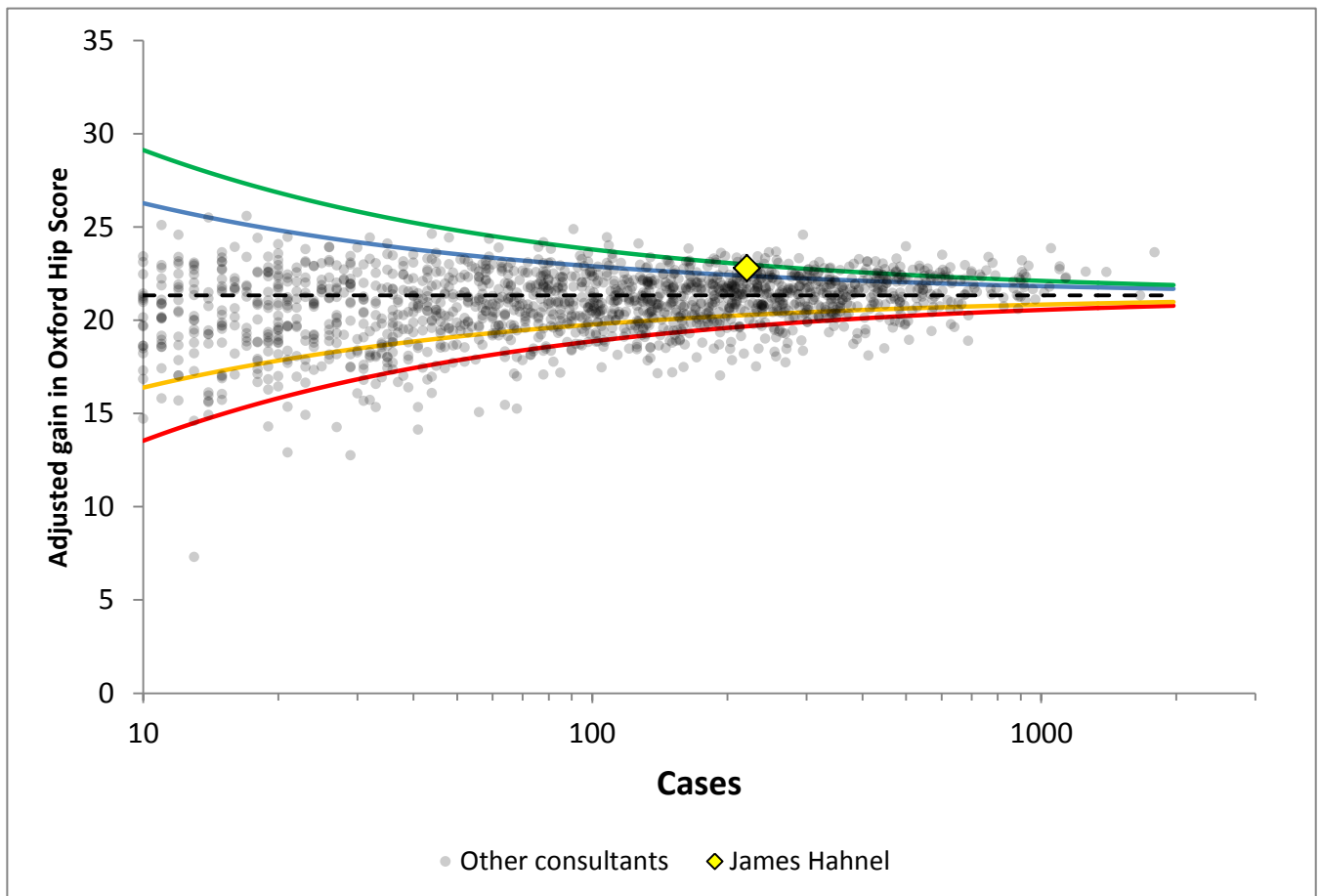
Primary Total Hip Replacement

PROMs Analysis



Primary Total Hip Replacement

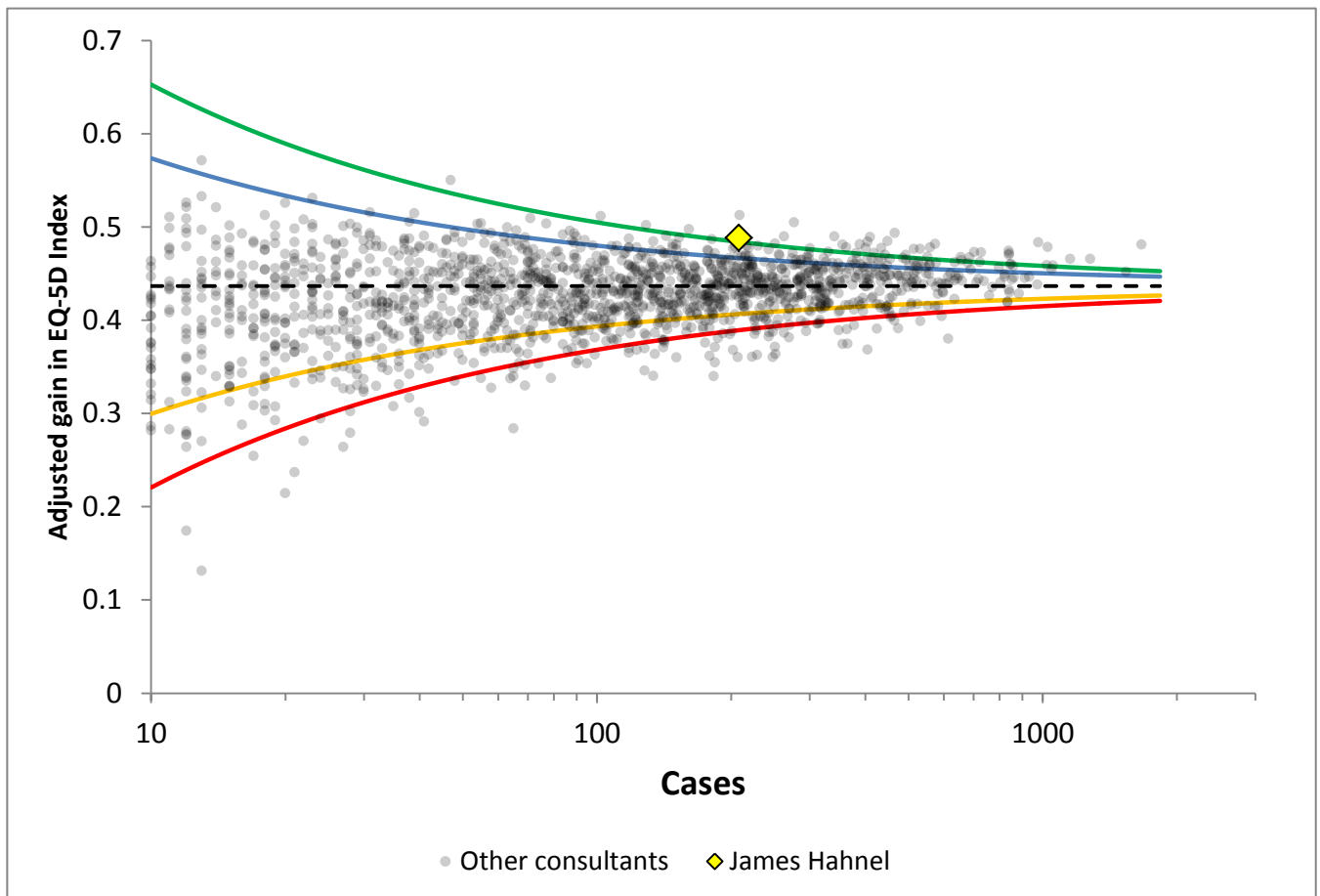
Oxford Hip Score



Gain in score is adjusted for case-mix using the model developed by NHS Digital. See methodology page for details.

Primary Total Hip Replacement

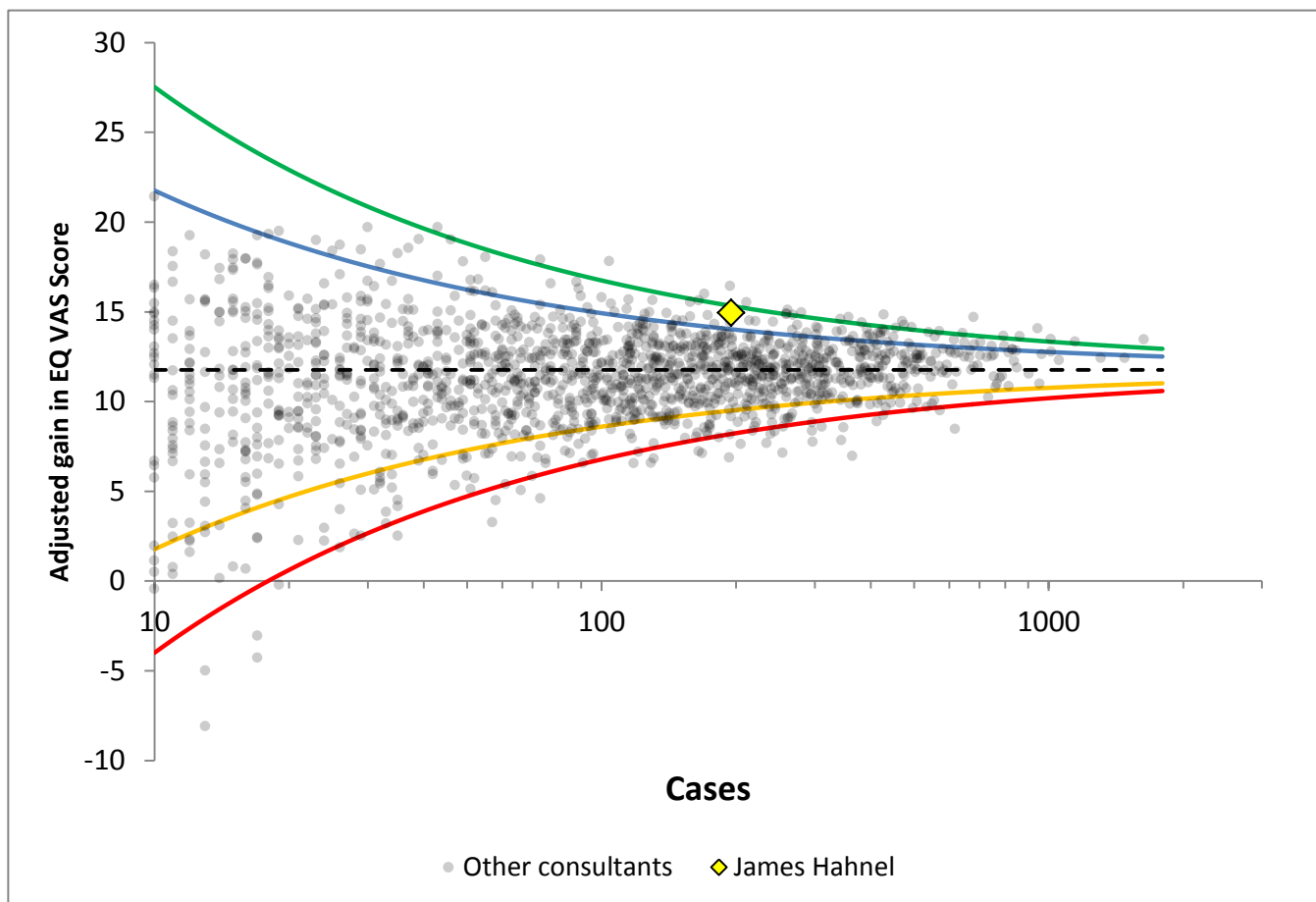
EQ-5D Index



Gain in score is adjusted for case-mix using the model developed by NHS Digital. See methodology page for details.

Primary Total Hip Replacement

EQ-VAS



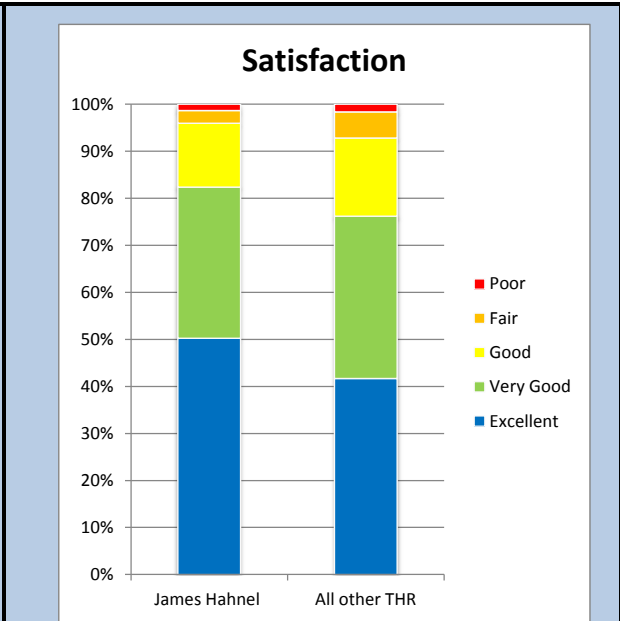
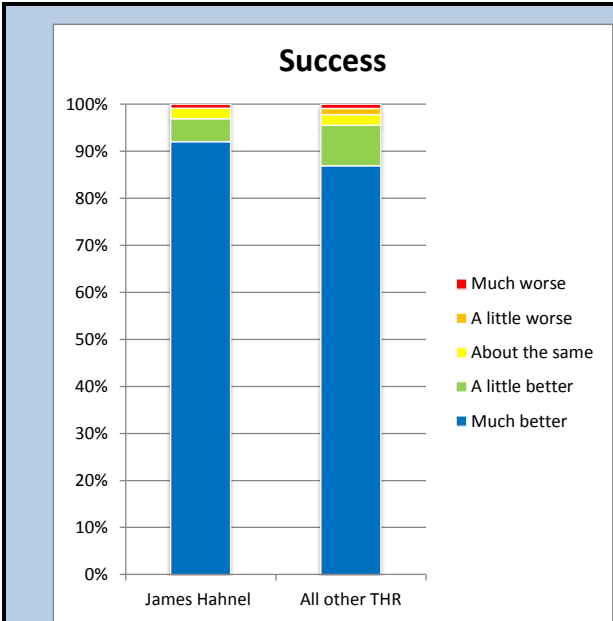
Gain in score is adjusted for case-mix using the model developed by NHS Digital. See methodology page for details.

PROMs Report for:

James Hahnel

Responses are not case-mix adjusted

Primary Total Hip Replacement



p-value for difference: 0.095

p-value for difference: 0.069

Answer to 6-months general health question: Overall, how are your problems now, compared to before your operation?

Answer to 6-months general health question: How would you describe the results of your operation?

PROMs Report for: **James Hahnel**

Primary Total Hip Replacement

Success and Satisfaction

Success	Number	James Hahnel		All other THR
		Observed %	Expected %	Observed %
Much better	207	92.0%	87.8%	86.9%
A little better	11	4.9%	8.0%	8.6%
About the same	5	2.2%	2.1%	2.2%
A little worse	0	0.0%	1.2%	1.3%
Much worse	2	0.9%	0.9%	0.9%
Total	225	100.0%	100.0%	100.0%

Answer to 6-months general health question:

"Overall, how are your problems now, compared to before your operation?"

Satisfaction	Number	James Hahnel		All other THR
		Observed %	Expected %	Observed %
Excellent	111	50.2%	42.0%	41.7%
Very Good	71	32.1%	35.3%	34.5%
Good	30	13.6%	15.9%	16.6%
Fair	6	2.7%	5.2%	5.6%
Poor	3	1.4%	1.6%	1.7%
Total	221	100.0%	100.0%	100.0%

Answer to 6-months general health question:

"How would you describe the results of your operation?"

Expected scores are calculated from the responses for all primary total hip replacement, adjusted for age, sex, pre-operative Oxford hip score, and pre-operative EQ-5D score.

Consultant PROMs Report for: **James Hahnel**

Primary Bicondylar Knee Replacement

Patient Details

	Consultant TKR with paired PROMs	All other TKR in NJR with paired PROMs
Total Procedures	360	316,957
Total Patients	322	286,573
Demographics		
Mean age	69.5	70.4
< 50	1.1%	1.3%
50 – 59	13.6%	10.1%
60 – 69	39.2%	33.4%
70 – 79	30.3%	39.8%
≥ 80	15.8%	15.4%
Median BMI	32	30
% BMI information available	66.9%	74.7%
Underweight (BMI < 18.5)	0.8%	0.2%
Normal (18.5 ≤ BMI < 25)	8.3%	9.3%
Overweight (25 ≤ BMI < 30)	25.3%	34.4%
Obese I (30 ≤ BMI < 35)	32.4%	33.1%
Obese II (35 ≤ BMI < 40)	27.0%	16.5%
Obese III (BMI ≥ 40)	6.2%	6.5%
% Male	47.2%	43.1%
ASA Grades		
P1 - Fit and healthy	8.9%	8.7%
P2 - Mild disease not incapacitating	77.8%	75.0%
P3 - Incapacitating systemic disease	13.3%	16.1%
P4 / P5	0.0%	0.2%
Indications		
Osteoarthritis	94.44%	97.84%
Rheumatoid Arthritis	2.22%	1.17%
Other Inflammatory Arthropathy	1.94%	0.63%
Previous Trauma	0.28%	0.50%
Avascular Necrosis	0.56%	0.29%
Other	0.83%	0.30%

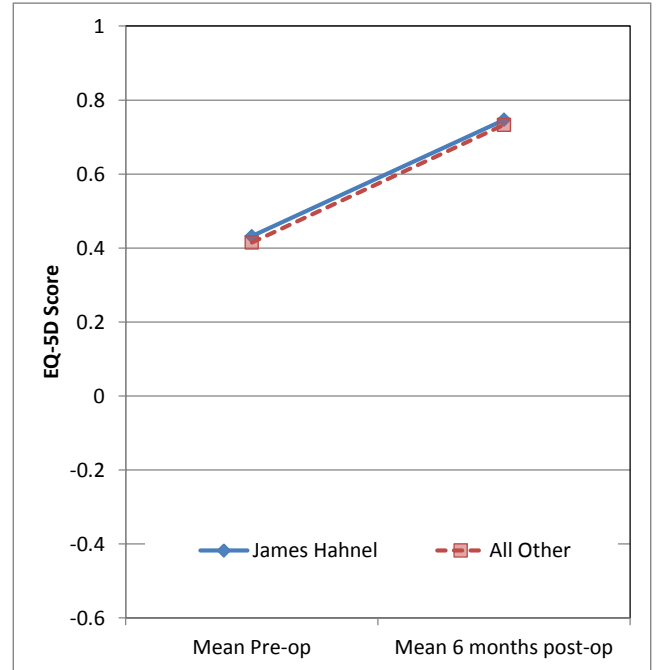
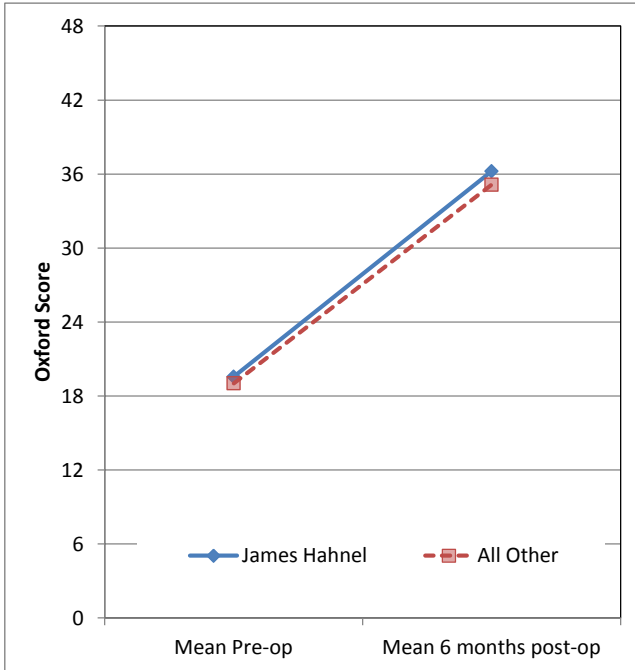
Total of indications may exceed total number of implants, since more than one indication can be listed per case.

PROMs Report for:

James Hahnel

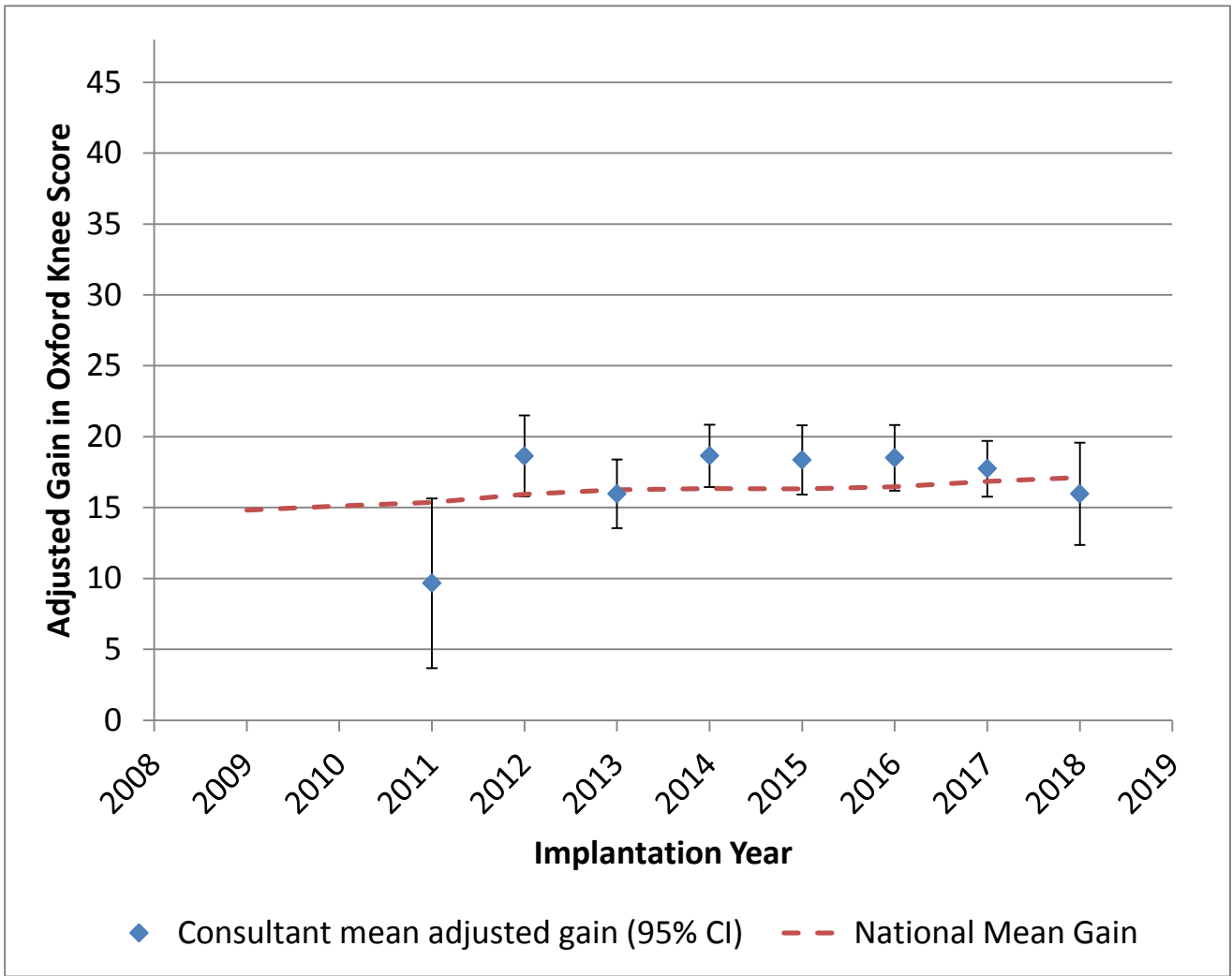
Primary Bicondylar Knee Replacement

PROMs Analysis



Primary Bicondylar Knee Replacement

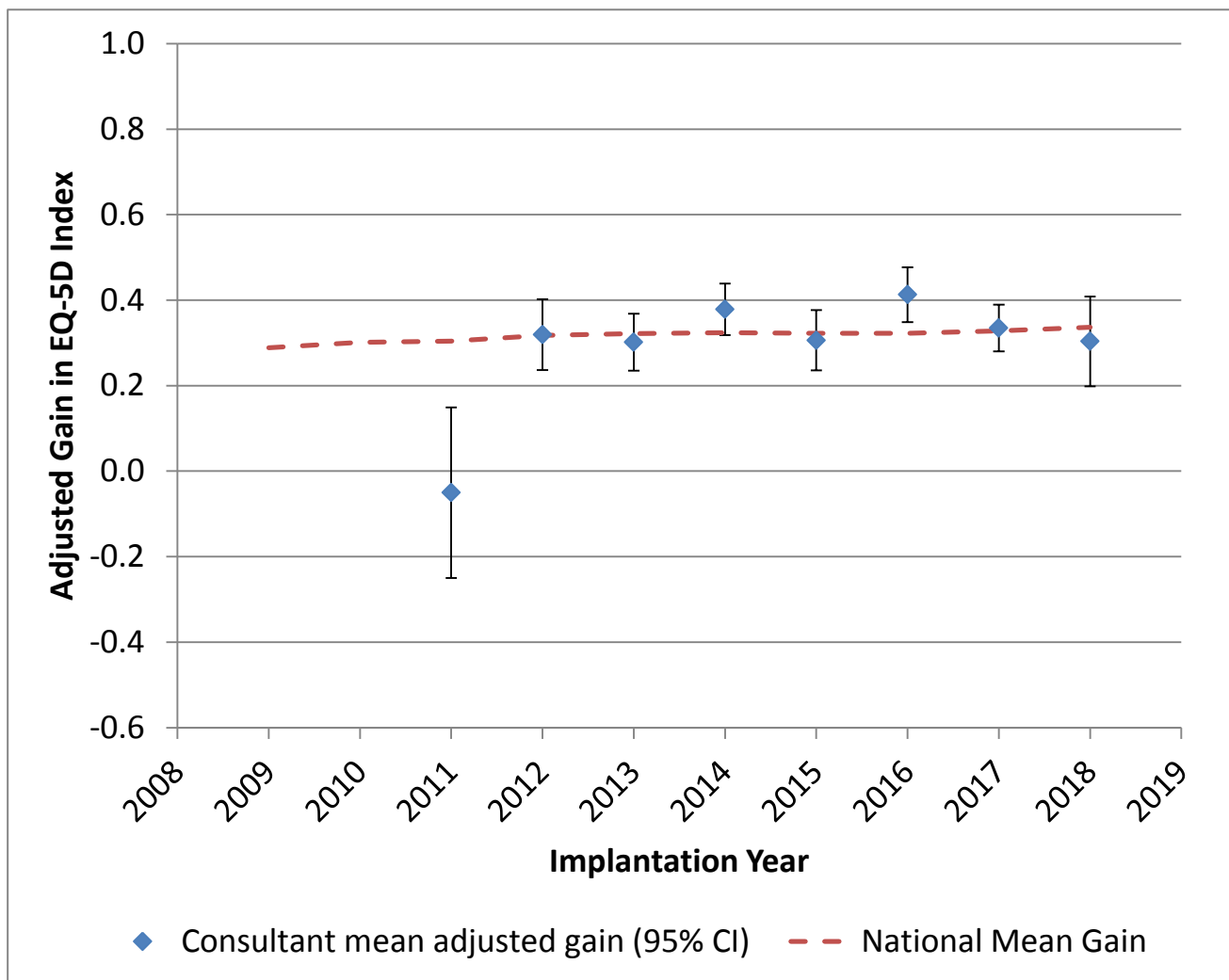
Oxford Knee Score



The dashed red line representing national mean gain shows the mean adjusted gain in PROMs score for each implantation year. This is based on all implants with an NHS PROMs score linked to an NJR record, and can vary from year to year.

Primary Bicondylar Knee Replacement

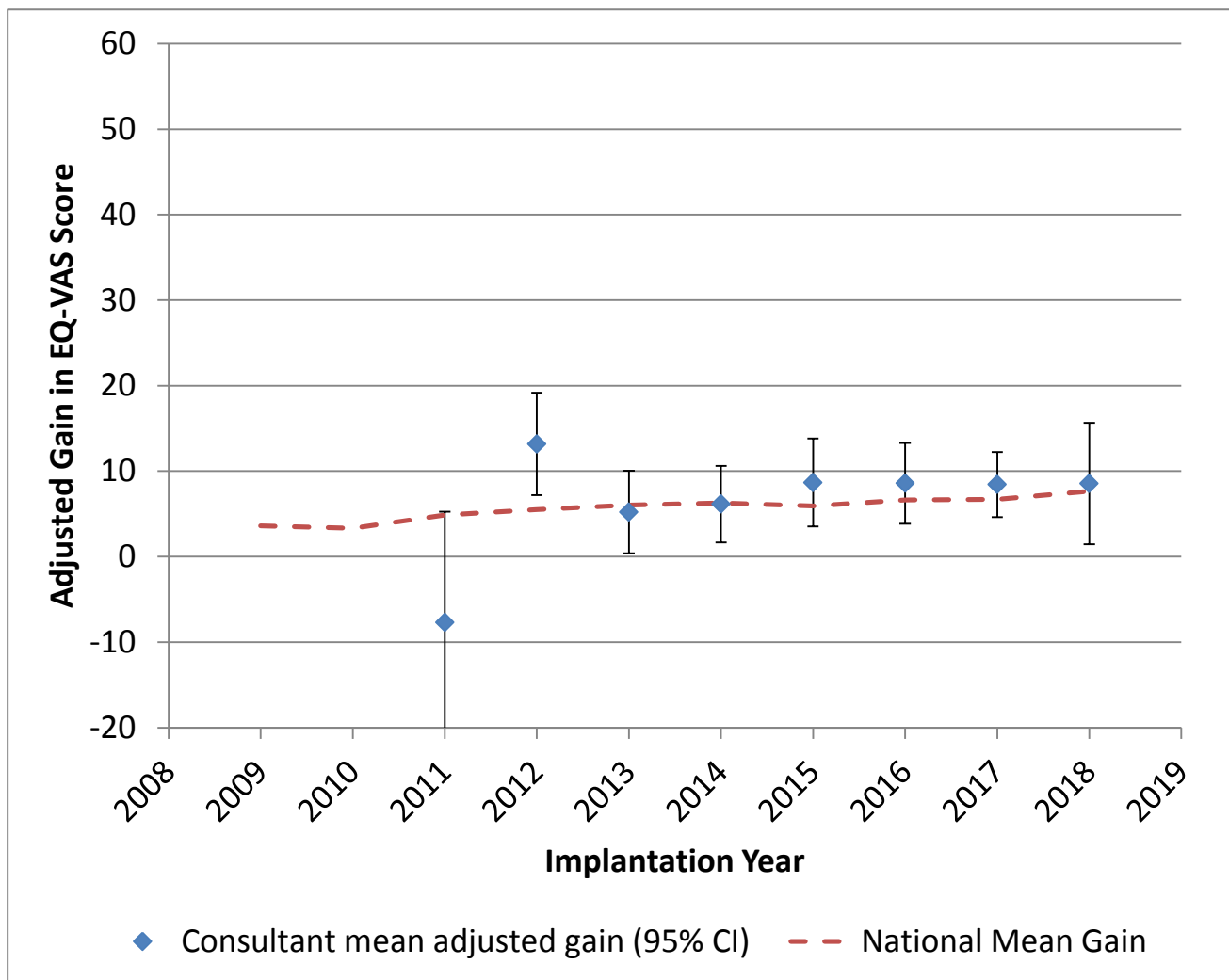
EQ-5D Index



The dashed red line representing national mean gain shows the mean adjusted gain in PROMs score for each implantation year. This is based on all implants with an NHS PROMs score linked to an NJR record, and can vary from year to year.

Primary Bicondylar Knee Replacement

EQ-VAS



The dashed red line representing national mean gain shows the mean adjusted gain in PROMs score for each implantation year. This is based on all implants with an NHS PROMs score linked to an NJR record, and can vary from year to year.

PROMs Report for:

James Hahnel

Primary Bicondylar Knee Replacement

PROMs Analysis

Oxford Knee Score (0 - 48)	James Hahnel	All other TKR
Paired Records	348	304,881
PreOp score	19.6 (18.8 - 20.4)	19.0 (19.0 - 19.1)
6 month score	36.2 (35.2 - 37.2)	35.1 (35.1 - 35.2)
Health gain	16.7 (15.6 - 17.7)	16.1 (16.1 - 16.1)
Health gain (adjusted)	17.6 (16.7 - 18.5)	16.1 (16.1 - 16.1)
Difference in adjusted gain *	0.6 to 2.5	
% Score Improved	93.1%	93.6%
% Adjusted gain > 0	95.7%	94.9%
p value % adjusted gain > 0	0.63	

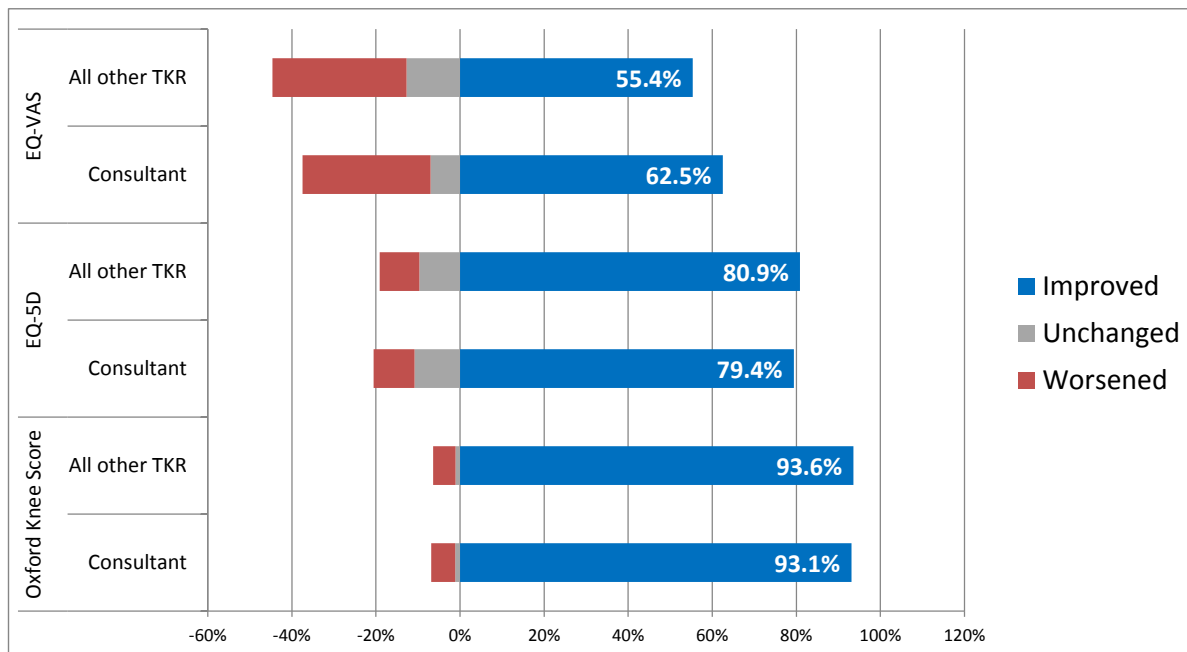
EQ-5D Index (-0.59 - 1.00)	James Hahnel	All other TKR
Paired Records	306	281,809
PreOp score	0.432 (0.397 - 0.467)	0.415 (0.414 - 0.416)
6 month score	0.747 (0.718 - 0.775)	0.733 (0.732 - 0.734)
Health gain	0.315 (0.278 - 0.351)	0.318 (0.317 - 0.319)
Health gain (adjusted)	0.337 (0.311 - 0.362)	0.317 (0.317 - 0.318)
Difference in adjusted gain *	-0.006 to 0.045	
% Score Improved	79.4%	80.9%
% Adjusted gain > 0	92.2%	92.1%
p value % adjusted gain > 0	1	

EQ-VAS (0 - 100)	James Hahnel	All other TKR
Paired Records	299	268,886
PreOp score	66.8 (64.5 - 69.1)	68.0 (67.9 - 68.1)
6 month score	74.6 (72.5 - 76.7)	73.7 (73.6 - 73.8)
Health gain	7.8 (5.4 - 10.2)	5.7 (5.6 - 5.8)
Health gain (adjusted)	7.8 (5.9 - 9.6)	5.7 (5.6 - 5.8)
Difference in adjusted gain *	0.2 to 3.9	
% Score Improved	62.5%	55.4%
% Adjusted gain > 0	75.6%	70.7%
p value % adjusted gain > 0	0.065	

Adjusted scores correspond to the NHS Digital version 3 casemix-adjustment model. See methodology page for details. Figures in brackets correspond to 95% confidence intervals. * 95% confidence interval for the mean adjusted gain for the consultant, minus the national average adjusted gain.

Primary Bicondylar Knee Replacement

PROMs Analysis

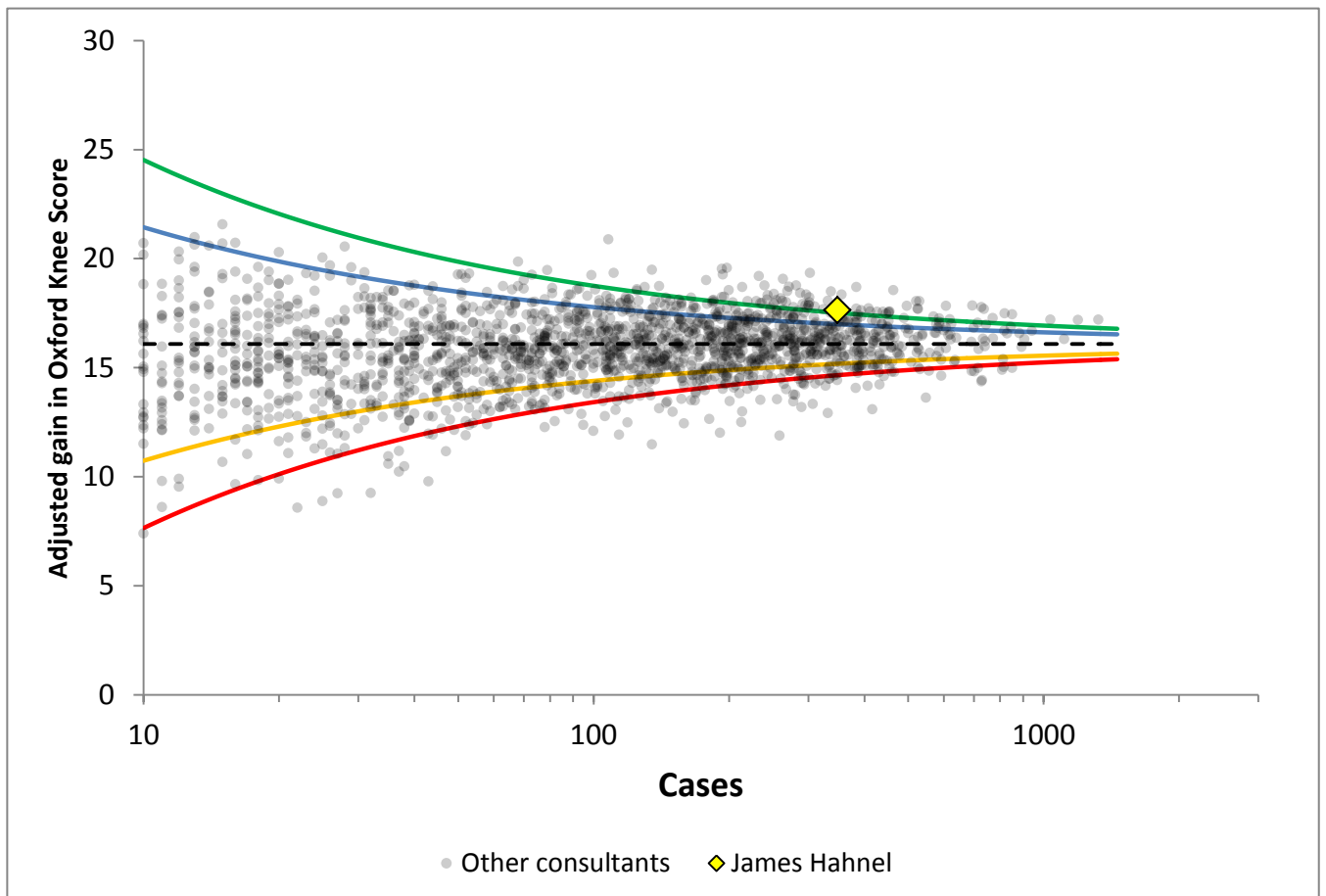


PROMs Report for:

James Hahnel

Primary Bicondylar Knee Replacement

Oxford Knee Score



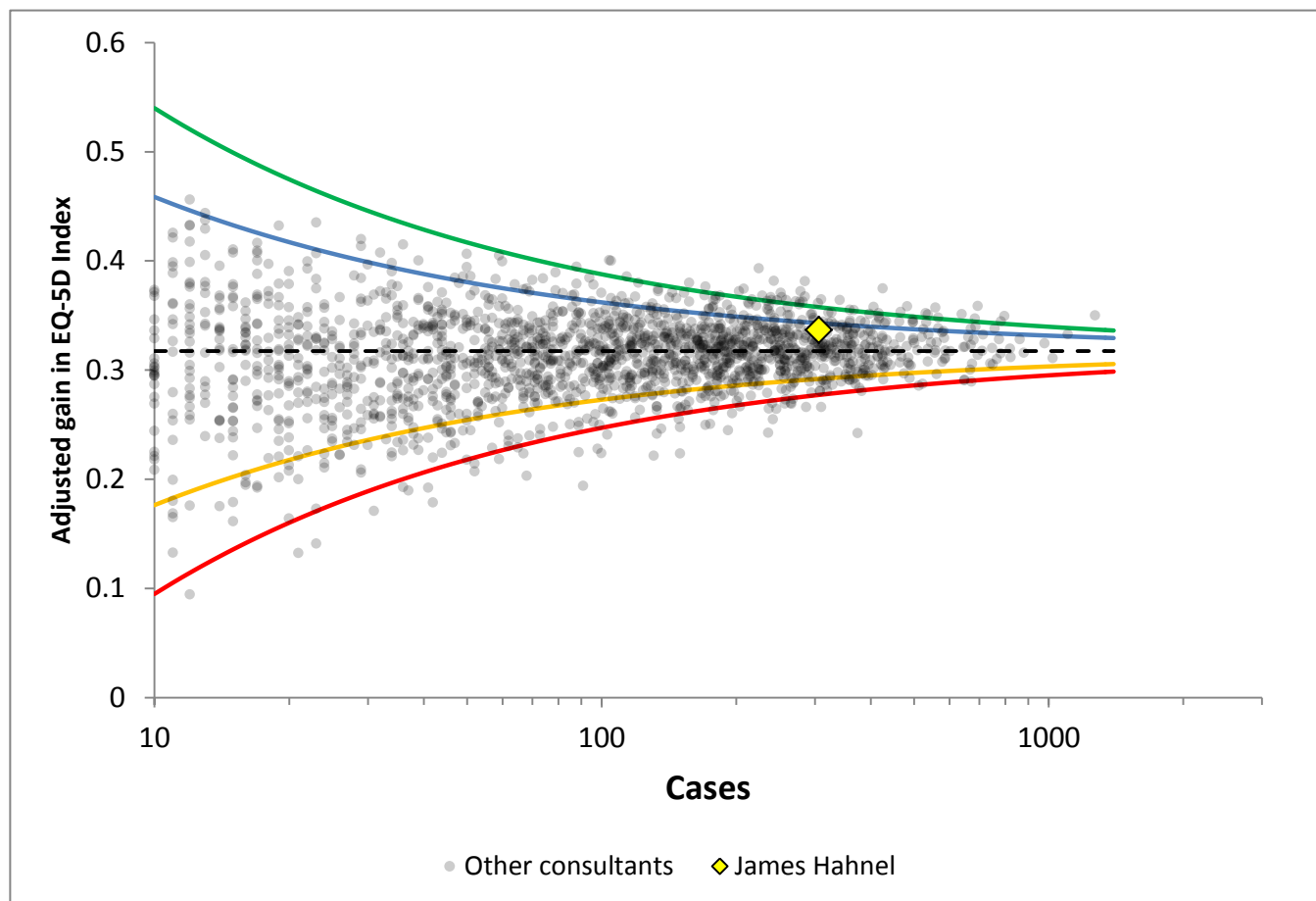
Gain in score is adjusted for case-mix using the model developed by NHS Digital. See methodology page for details.

PROMs Report for:

James Hahnel

Primary Bicondylar Knee Replacement

EQ-5D Index



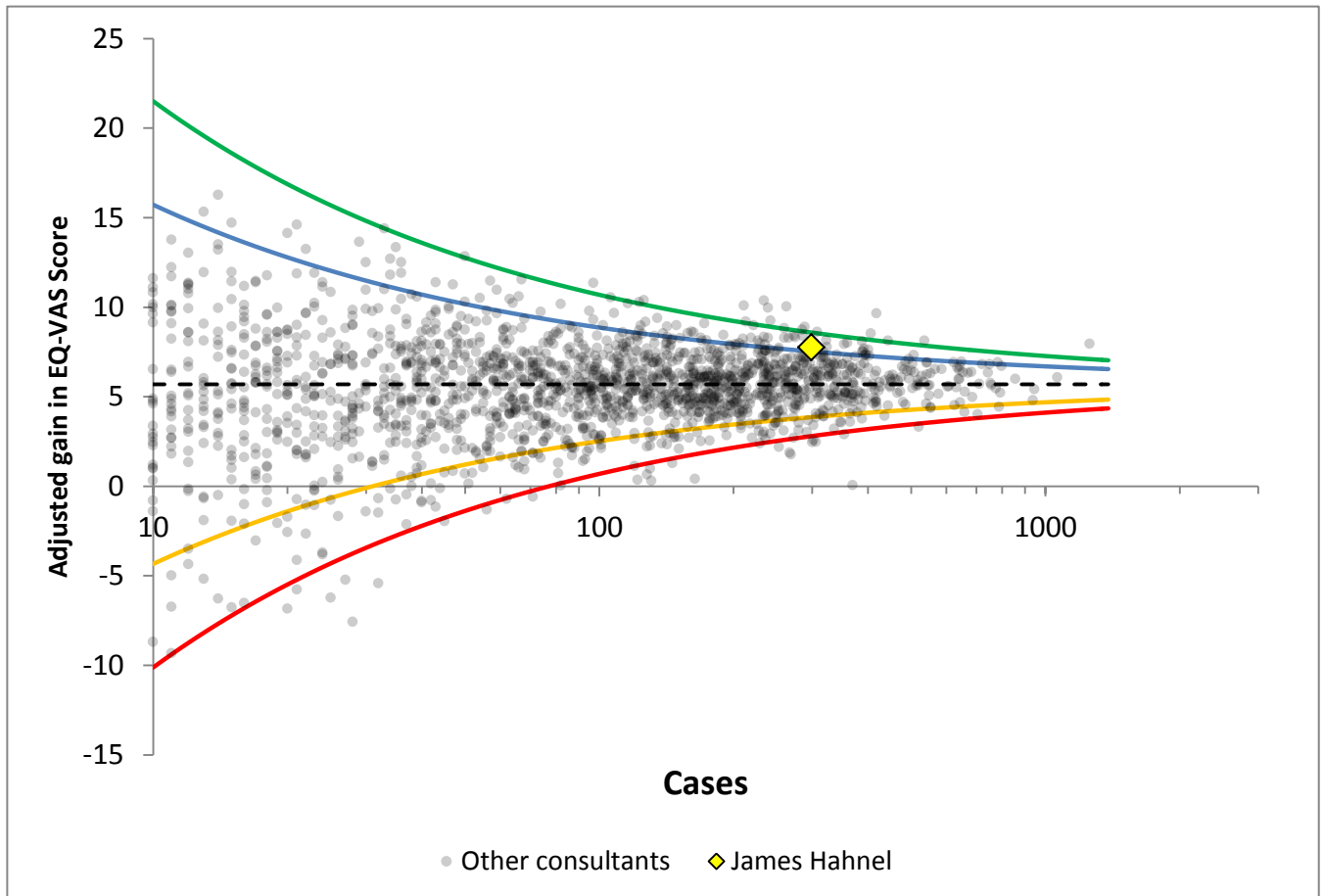
Gain in score is adjusted for case-mix using the model developed by NHS Digital. See methodology page for details.

PROMs Report for:

James Hahnel

Primary Bicondylar Knee Replacement

EQ-VAS



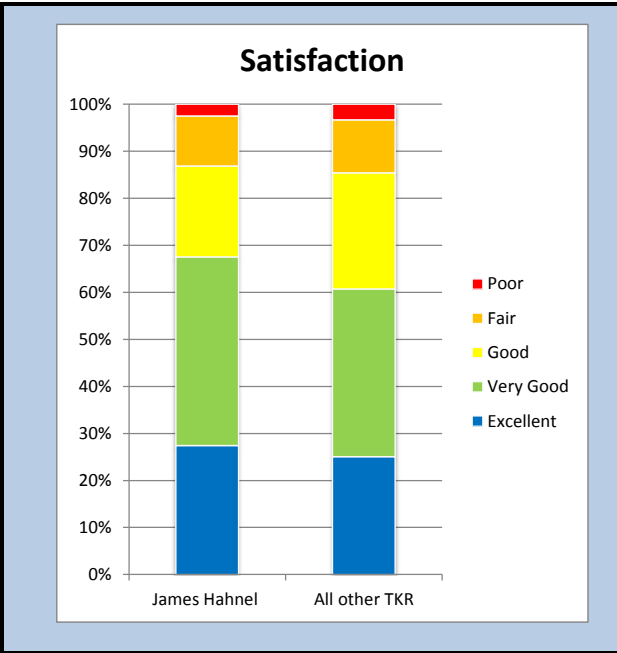
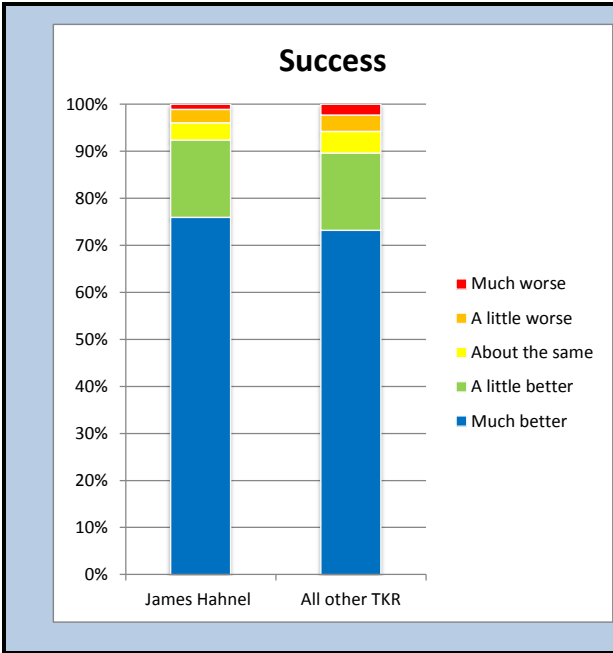
Gain in score is adjusted for case-mix using the model developed by NHS Digital. See methodology page for details.

PROMs Report for:

James Hahnel

Responses are not case-mix adjusted

Primary Bicondylar Knee Replacement



p-value for difference: 0.53

p-value for difference: 0.1

Answer to 6-months general health question: Overall, how are your problems now, compared to before your operation?

Answer to 6-months general health question: How would you describe the results of your operation?

PROMs Report for: **James Hahnel**

Primary Bicondylar Knee Replacement

Success and Satisfaction

Success	Number	James Hahnel		All other TKR
		Observed %	Expected %	Observed %
Much better	268	75.9%	73.0%	73.2%
A little better	58	16.4%	16.7%	16.4%
About the same	13	3.7%	4.1%	4.6%
A little worse	10	2.8%	3.8%	3.5%
Much worse	4	1.1%	2.4%	2.3%
Total	353	100.0%	100.0%	100.0%

Answer to 6-months general health question:

"Overall, how are your problems now, compared to before your operation?"

Satisfaction	Number	James Hahnel		All other TKR
		Observed %	Expected %	Observed %
Excellent	98	27.5%	26.4%	25.1%
Very Good	143	40.1%	35.8%	35.7%
Good	69	19.3%	23.3%	24.7%
Fair	38	10.6%	10.9%	11.2%
Poor	9	2.5%	3.6%	3.3%
Total	357	100.0%	100.0%	100.0%

Answer to 6-months general health question:

"How would you describe the results of your operation?"

Expected scores are calculated from the responses for all primary bicondylar knee replacement, adjusted for age, sex, pre-operative Oxford knee score, and pre-operative EQ-5D score.

Methodology

Adjustment

Adjusted gain in score is taken from the NHS Digital version 3 casemix-adjustment model, which is used in publications of Trust level PROMs scores. Variables considered for inclusion in the adjustment model are taken from the PROMs dataset, HES, and Index of Multiple Deprivation. These include pre-operative score, age, sex, ethnicity, deprivation index, comorbidities, symptom period and diagnosis. Details of the adjustment methodology can be found on the NHS Digital website in the document: <https://www.england.nhs.uk/statistics/wp-content/uploads/sites/2/2013/10/proms-meth-prim-revis.pdf>

Disclaimer

Disclaimer

The National Joint Registry (NJR) produces this report through its contractor, Northgate Public Services (UK) Limited (NPS) using data collected, collated and provided by third parties. As a result, neither NJR or NPS takes any responsibility for the accuracy, currency, reliability and correctness of any data used or referred to in this report, and disclaims all warranties in relation to such data, in each case to the maximum extent permitted by legislation.

To the maximum extent permitted by law, neither the NJR or NPS shall have any liability (including but not limited to liability by reason of negligence) for any loss, damage, cost or expense incurred or arising by reason of any person using or relying on the data within this report and whether caused by reason of any error, omission or misrepresentation in the report or otherwise. This report is not to be taken as advice. Third parties using or relying on the data in this report do so at their own risk and will be responsible for making their own assessment and should verify all relevant representations, statements and information with their own professional advisers.